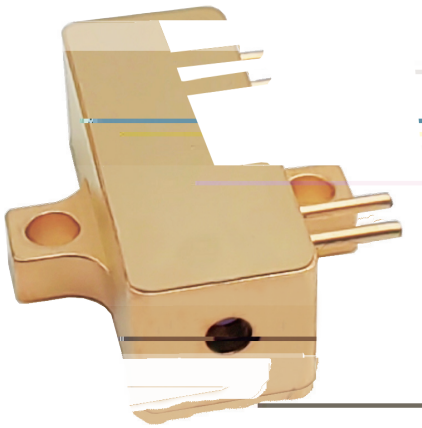


# 100~300μJ

# PIN 1535nm



带PIN 1535nm

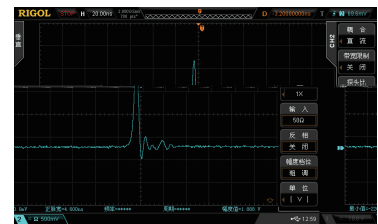
PIN

PIN

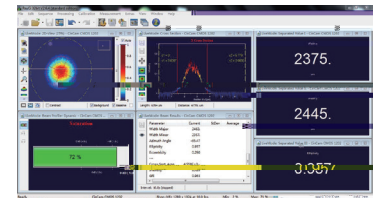
Er:glass

Q

( J )	100	200	300
( ns )	5		
( Hz )	10		
( A )	8	10	12
PIN (V@50 )	2~3		
Typ.(mrad)	10	8	
	TEM <sub>00</sub>		
( g )			
(LxWxH,mm)	21x8x7	25x8x7	
( )	-55~80		



PIN



波长 (nm)	型号	重复频率 (Hz)	脉冲宽度 (ns)	单脉冲能量 (μJ)	尺寸 (mm)
1535	R1535-0.01-5-100-F1B	10	5	100	21x8x7
	R1535-0.01-5-200-F1B	10	5	200	21x8x7
	R1535-0.01-5-300-F2B	10	5	300	25x8x7

F1B

F2B

